



KS A 9001 / ISO 9001 / EN ISO 9001 / QS-9000 / ISO-14001
APPROVED BY KPC-QA / Clean 3D



PJ KODIVAC VACUUM PRODUCTS

Cumulative High Technology Your Technological Partner For
The New Millennium



 (주)PJ KODIVAC

 VACTECH SDN. BHD.
(Company No. 389978-P)

FLANGES & FITTING

Flange는 배관 및 Component의 결합에 있어 상호호환이 가능하도록 규격화 되어야 하며, 정확하게 Sealing 이 이루어 질 수 있도록 제작 되어야 합니다. 고진공용 Flange의 경우 흔히 O-Ring에 의해 Sealing 되어지는 방식을 이용하며 O-Ring의 재질은 용도에 따라 다양하게 선택되어 질 수 있습니다.

It should have precise sealing during connecting of components and inspection, and should be interchangeable. In case of HV flange, it should be standardized to be used in components adhesion and sealing by O-ring. In case of UHV flange, there's limit that it is can't be reused in sealing by using metal seal.

website : www.vactech.com.my
e-mail : sales@vactech.com.my

Introduction

초고진공(UHV)용의 경우 Cu, Ag, Au 등의 Gasket를 Sealing 재료로 사용하며 이러한 Gasket는 재질상의 특성으로 인해 반복 사용이 불가능한 제한이 있습니다. PJ KODIVAC에서 생산되는 Flange는 넓은 범위의 규격화된 Size와 우수한 품질로 높은 신뢰성을 가지고 있으며 중진공, 고진공, 초고진공 등의 넓은 범위에서 사용될 수 있도록 생산되고 있습니다. 특히, 대부분의 Flange들은 국제적인 ISO표준규격과 호환성이 있도록 제작하여, 이 표준규격에 준한 어떠한 Flange와도 결합될 수 있으며 고객의 요구 사양에 따라 Special Flange도 제작이 가능합니다.

PJ KODIVAC Flange takes advantage of standardized sizes of wide scope, credence from excellent quality, and availability in wide range of medium, high, and ultra high vacuum, specially, most of flanges have ISO Standard Sizes and interchangeability, and can be connected with standard size flanges. Also it is possible to manufacture special flange to the customer requirements.

현재 PJ KODIVAC에서 생산되고 있는 Flange 는

- CF TYPE
- NW TYPE
- JIS TYPE
 - VG TYPE
 - VF TYPE 이 생산되고 있습니다.

The Flanges are

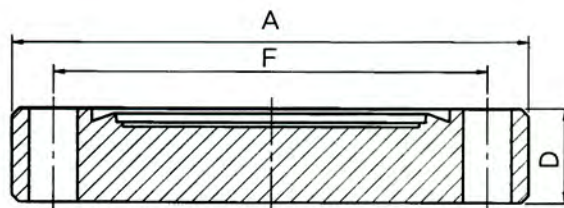
- CF Type
- NW Type
- JIS Type
 - VG Type
 - VF Type



Flanges & Fitting

CF BLANK FLANGES

Design / Outline Drawing(mm)

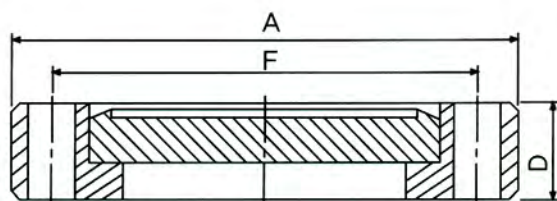


Non Rotatable Blank Flange

Technical Specification CF NON ROTABLE BLANK FLANGE

Flange Type		Reference	A (mm)	D (mm)	F (mm)	Hole No. - ϕ
mm	inch					
34	1 - 1/3	CF 16 NRB	34	7.3	27.0	6 - 4.4
70	2 - 3/4	CF 35 NRB	70	12.7	58.7	6 - 6.6
86	3 - 3/8	CF 50 NRB	86	16.0	72.4	8 - 8.4
114	4 - 1/2	CF 63 NRB	114	17.5	92.1	8 - 8.4
152	6	CF 100 NRB	152	20.0	130.3	16 - 8.4
203	8	CF 150 NRB	203	22.0	181.0	20 - 8.4
253	10	CF 200 NRB	253	25.0	231.8	24 - 8.4
305	12	CF 250 NRB	305	28.0	284.0	32 - 8.4
336	13 - 1/4	CF 336 NRB	336.5	28.5	306.3	30 - 10.5

Design / Outline Drawing(mm)



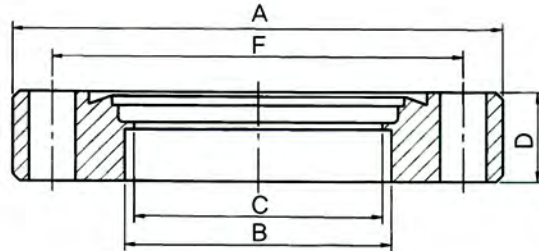
Rotatable Blank Flange

Technical Specification CF ROTABLE BLANK FLANGE

Flange Type		Reference	A (mm)	D (mm)	F (mm)	Hole No. - ϕ
mm	inch					
34	1 - 1/3	CF 16 RB	34	7.3	27.0	6 - 4.4
70	2 - 3/4	CF 35 RB	70	12.7	58.7	6 - 6.6
86	3 - 3/8	CF 50 RB	86	16.0	72.4	8 - 8.4
114	4 - 1/2	CF 63 RB	114	17.5	92.1	8 - 8.4
152	6	CF 100 RB	152	20.0	130.3	16 - 8.4
203	8	CF 150 RB	203	22.0	181.0	20 - 8.4
253	10	CF 200 RB	253	25.0	231.8	24 - 8.4
305	12	CF 250 RB	305	28.0	284.0	32 - 8.4
336	13 - 1/4	CF 336 RB	336.5	28.5	306.3	30 - 10.5

CF BORED FLANGES

Design / Outline Drawing(mm)

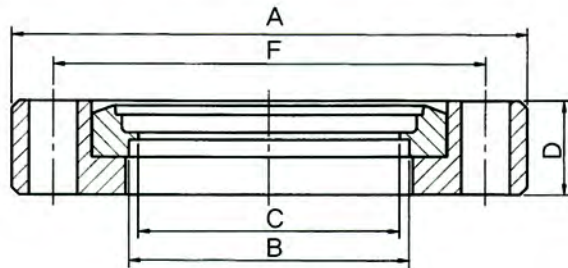


Non Rotatable Flange

Technical Specification CF NON ROTABLE BORED FLANGES(TAPPED TYPE)

Flange Type		Reference	A (mm)	B (mm)	C (mm)	D (mm)	F (mm)	Hole No. - ϕ	Tapped Tye Table No. - ϕ
mm	inch								
34	1 - 1/3	CF 16 NRO	34	19.2	16.5	7.3	27.0	27.0	(M4)
70	2 - 3/4	CF 35 NRO	70	38.5	35.5	12.7	58.7	58.7	(M6)
86	3 - 3/8	CF 50 NRO	86	51	49	16.0	72.4	72.4	(M8)
114	4 - 1/2	CF 63 NRO	114	63.8	61.0	17.5	92.1	92.1	(M8)
152	6	CF 100 NRO	152	102.0	97.0	20.0	130.3	130.3	(M8)
203	8	CF 150 NRO	203	153.5	148.5	22.0	181.0	181.0	(M8)
253	10	CF 200 NRO	253	203.5	198.5	25.0	231.8	231.8	(M8)
305	12	CF 250 NRO	305	255.5	251.5	28.0	284.0	284.0	(M8)
336	13 - 1/4	CF 336 NRO	336	274.5	268.5	28.5	306.3	306.3	(M10)

Design / Outline Drawing(mm)



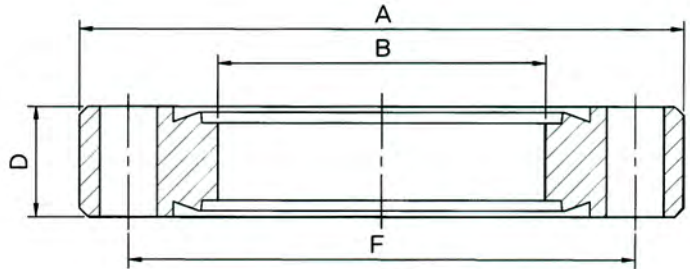
Rotatable Flange

Technical Specification CF ROTABLE BORED FLANGES(TAPPED TYPE)

Flange Type		Reference	A (mm)	B (mm)	C (mm)	D (mm)	F (mm)	Hole No. - ϕ	Tapped Tye Table No. - ϕ
mm	inch								
34	1 - 1/3	CF 16 RO	34	19.2	16.5	7.3	27.0	6 - 4.4	(M4)
70	2 - 3/4	CF 35 RO	70	38.5	35.5	12.7	58.7	6 - 6.6	(M6)
86	3 - 3/8	CF 50 RO	86	51	49	16.0	72.4	8 - 8.4	(M8)
114	4 - 1/2	CF 63 RO	114	63.8	61.0	17.5	92.1	8 - 8.4	(M8)
152	6	CF 100 RO	152	102.0	97.0	20.0	130.3	16 - 8.4	(M8)
203	8	CF 150 RO	203	153.5	148.5	22.0	181.0	20 - 8.4	(M8)
253	10	CF 200 RO	253	203.5	198.5	25.0	231.8	24 - 8.4	(M8)
305	12	CF 250 RO	305	255.5	251.5	28.0	284.0	32 - 8.4	(M8)
336	13 - 1/4	CF 336 RO	336.5	274.5	268.5	28.5	306.3	30 - 10.5	(M10)

CF DOUBLE FLANGES

Design / Outline Drawing(mm)



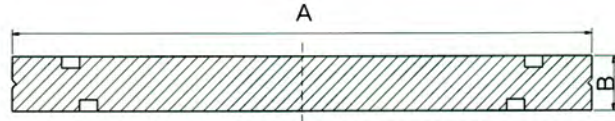
Double Side flange

Technical Specification CF DOUBLE SIDE FLANGES

Flange Type		Reference	A (mm)	B (mm)	D (mm)	F (mm)	Hole No. - ϕ
mm	inch						
34	1 - 1/3	CF 16DS-1	34	Blank	7.3	27.0	6 - 4.4
34	1 - 1/3	CF 16DS-2	34	10.0	7.3	27.0	6 - 4.4
34	1 - 1/3	CF 16DS-3	34	17.4	7.3	27.0	6 - 4.4
70	2 - 3/4	CF 35DS-1	70	Blank	12.7	58.7	6 - 6.6
70	2 - 3/4	CF 35DS-2	70	10	12.7	58.7	6 - 6.6
70	2 - 3/4	CF 35DS-3	70	20	12.7	58.7	6 - 6.6
70	2 - 3/4	CF 35DS-4	70	30	12.7	58.7	6 - 6.6
70	2 - 3/4	CF 35DS-5	70	38.5	12.7	58.7	6 - 6.6
86	3 - 3/8	CF 50DS-1	86	Blank	16.0	72.4	8 - 8.4
86	3 - 3/8	CF 50DS-2	86	10	16.0	72.4	8 - 8.4
86	3 - 3/8	CF 50DS-3	86	20	16.0	72.4	8 - 8.4
86	3 - 3/8	CF 50DS-4	86	30	16.0	72.4	8 - 8.4
86	3 - 3/8	CF 50DS-5	86	40	16.0	72.4	8 - 8.4
86	3 - 3/8	CF 50DS-6	86	51.0	16.0	72.4	8 - 8.4
114	4 - 1/2	CF 63DS-1	114	Blank	17.5	92.1	8 - 8.4
114	4 - 1/2	CF 63DS-2	114	30	17.5	92.1	8 - 8.4
114	4 - 1/2	CF 63DS-3	114	40	17.5	92.1	8 - 8.4
114	4 - 1/2	CF 63DS-4	114	50	17.5	92.1	8 - 8.4
114	4 - 1/2	CF 63DS-5	114	63.8	17.5	92.1	8 - 8.4
152	6	CF 100DS-1	152	Blank	20.0	130.3	16 - 8.4
152	6	CF 100DS-2	152	102.0	20.0	130.3	16 - 8.4
203	8	CF 150DS-1	203	Blank	22.0	181.0	20 - 8.4
203	8	CF 150DS-2	203	153.5	22.0	181.0	20 - 8.4
253	10	CF 200DS-1	253	Blank	25.0	231.8	24 - 8.4
253	10	CF 200DS-2	253	203.5	25.0	231.8	24 - 8.4
305	12	CF 250DS-1	305	Blank	28.0	284.0	32 - 8.4
305	12	CF 250DS-2	305	255.5	28.0	284.0	32 - 8.4
336	13 - 1/4	CF 336DS-1	336.5	Blank	28.5	306.3	30 - 10.5
336	13 - 1/4	CF 336DS-2	336.5	274.5	28.5	306.4	30 - 10.5

▶ ISO FLANGES

Design / Outline Drawing(mm)

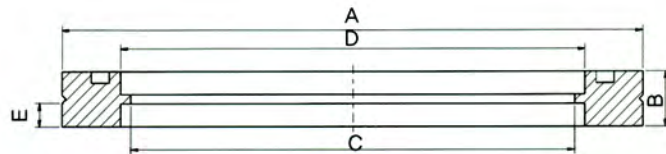


Blank Flange

Technical Specification ISO BLANK FLANGES

Flange Type	A (mm)	B (mm)
ISO 63	95	12
ISO 80	110	12
ISO 100	130	12
ISO 160	180	12
ISO 200	240	12
ISO 250	290	12
ISO 320	370	17
ISO 400	450	17
ISO 500	550	17
ISO 630	690	22

Design / Outline Drawing(mm)



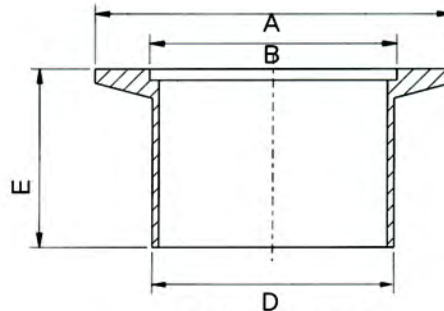
Flange

Technical Specification ISO BORED FLANGES

Flange Type	A (mm)	B (mm)	C (mm)	D (mm)	E (mm)
ISO 63	95	12	60.2	70	5
ISO 80	110	12	72.9	83	5
ISO 100	130	12	98.3	102	5
ISO 160	180	12	148	153	5
ISO 200	240	12	197	213	5
ISO 250	290	12	247.7	261	5
ISO 320	370	17	310	318	7.5
ISO 400	450	17	396.7	400	7.5
ISO 500	550	17	498.3	501	7.5
ISO 600	690	22	643	651	10

FLANGES

Design / Outline Drawing(mm)

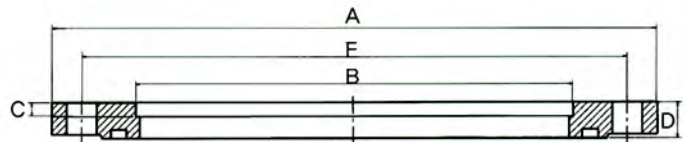


Socket Flange

Technical Specification NW SOCKET FLANGES

Flange Type	A (mm)	B (mm)	D (mm)	E (mm)
NW 10	30	12.2	13.5	30
NW 16	30	17.2	20	30
NW 25	40	26.2	28	30
NW 40	55	41.2	44.5	30
NW 50	75	52.5	60.5	30

Design / Outline Drawing(mm)

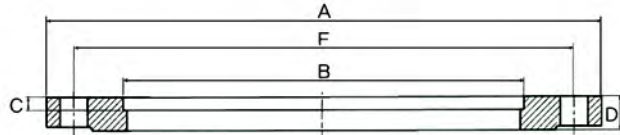


Non Rotatable VG Bored Flange

Technical Specification NON ROTATABLE VG BORED FLANGES (JIS)

Flange Type(JIS)		Reference	A (mm)	B (mm)	C (mm)	D (mm)	E (mm)	E (mm)
A	B							
10	3/8	VG 10	70	17.3	2.5	8	50	4 - 10
20	3/4	VG 20	80	27.2	2.5	8	60	4 - 10
25	1	VG 25	90	34.0	3	8	70	4 - 10
40	1 1/2	VG 40	105	48.6	3	10	85	4 - 10
50	2	VG 50	120	60.5	3	10	100	4 - 10
65	2 1/2	VG 65	145	76.3	3	10	120	4 - 12
80	3	VG 80	160	89.1	4	12	135	4 - 12
100	4	VG 100	185	114.3	4	12	160	8 - 12
125	5	VG 125	210	139.8	4	12	185	8 - 12
150	6	VG 150	235	165.2	4	12	210	8 - 12
200	8	VG 200	300	216.3	7	16	270	8 - 15
250	10	VG 250	350	267.4	7	16	320	12 - 15
300	12	VG 300	400	318.5	7	16	370	12 - 15
350	14	VG 350	450	355.6	9	20	420	12 - 15
400	16	VG 400	520	406.4	9	20	480	12 - 19
450	18	VG 450	575	457.2	9	20	535	16 - 19
500	20	VG 500	625	508.0	10	22	585	16 - 19
550	22	VG 550	680	558.8	11	24	640	16 - 19
600	24	VG 600	750	609.6	11	24	700	16 - 23
650	26	VG 650	800	660.4	11	24	750	20 - 23
700	28	VG 700	850	711.2	11	26	800	20 - 23
750	30	VG 750	900	762.0	11	26	850	20 - 23
800	32	VG 800	955	812.8	11	26	905	24 - 23
900	36	VG 900	1065	914.4	11	28	1015	24 - 25
1000	42	VG 1000	1170	1016.0	11	28	1120	24 - 25

Design / Outline Drawing(mm)



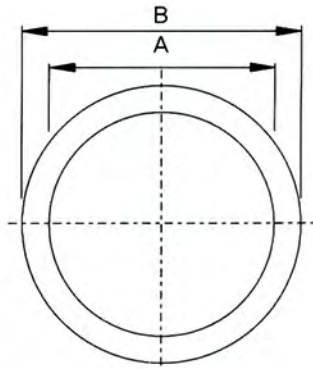
Non Rotatable VF Bored Flange

Technical Specification NON ROTATABLE VF BORED FLANGES (JIS)

Flange Type		Reference	A (mm)	B (mm)	C (mm)	D (mm)	F (mm)	Hole No. - ϕ
mm	inch							
10	3/8	VF 10	70	17.3	2.5	8	50	4 - 10
20	3/4	VF 20	80	27.2	2.5	8	60	4 - 10
25	1	VF 25	90	34.0	3	8	70	4 - 10
40	1 1/2	VF 40	105	48.6	3	10	85	4 - 10
50	2	VF 50	120	60.5	3	10	100	4 - 10
65	2 1/2	VF 65	145	76.3	3	10	120	4 - 12
80	3	VF 80	160	89.1	4	12	135	4 - 12
100	4	VF 100	185	114.3	4	12	160	8 - 12
125	5	VF 125	210	139.8	4	12	185	8 - 12
150	6	VF 150	235	165.2	4	12	210	8 - 12
200	8	VF 200	300	216.3	7	16	270	8 - 15
250	10	VF 250	350	267.4	7	16	320	12 - 15
300	12	VF 300	400	318.5	7	16	370	12 - 15
350	14	VF 350	450	355.6	9	20	420	12 - 15
400	16	VF 400	520	406.4	9	20	480	12 - 19
450	18	VF 450	575	457.2	9	20	535	16 - 19
500	20	VF 500	625	508.0	10	22	585	16 - 19
550	22	VF 550	680	558.8	11	24	640	16 - 19
600	24	VF 600	750	609.6	11	24	700	16 - 23
650	26	VF 650	800	660.4	11	24	750	20 - 23
700	28	VF 700	850	711.2	11	26	800	20 - 23
750	30	VF 750	900	762.0	11	26	850	20 - 23
800	32	VF 800	955	812.8	11	26	905	24 - 23
900	36	VF 900	1065	914.4	11	28	1015	24 - 25
1000	42	VF 1000	1170	1016.0	11	28	1120	24 - 25

GASKETS & CLAMPS

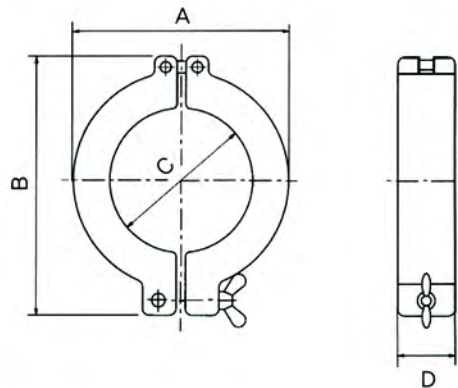
Design / Outline Drawing(mm)



Technical Specification CF COPPER GASKETS

Flange Type	PJKODIVAC Flange	A (mm)	B (mm)
1 - 1/3"	CF 16	15	21.3
2 - 3/4"	CF 35	37	48.2
3 - 3/8"	CF 50	51	61.6
4 - 1/2"	CF 63	68.4	82.3
6"	CF 100	106.5	120.5
8"	CF 150	157.3	171.3
10"	CF 200	208.1	222.1

Design / Outline Drawing(mm)

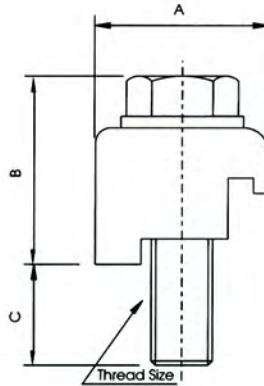


Technical Specification NW QUICK CLAMPS

Flange Type	A (mm)	B (mm)	C (mm)	D (mm)
NW 10	45	61	22	16
NW 16	45	61	22	16
NW 25	55	72	32	16
NW 40	72	90	48	18
NW 50	96	123	63	25

ISO CLAW CLAMPS

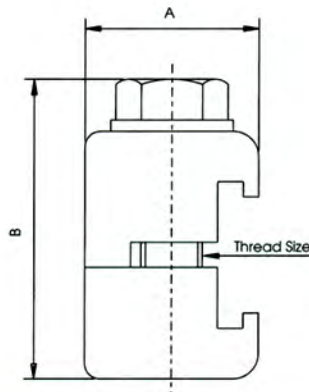
Design / Outline Drawing(mm)



Technical Specification ISO SINGLE CLAW CLAMPS

Flange Type	A (mm)	B (mm)	Thread Size	Clamps Required
ISO 63	23.9	23.6	M8	4
ISO 80	23.9	23.6	M8	8
ISO 100	23.9	23.6	M8	8
ISO 160	27.9	23.6	M10	8
ISO 200	27.9	23.6	M10	12
ISO 250	27.9	23.6	M10	12
ISO 320	33.8	30	M12	12
ISO 400	33.8	30	M12	16
ISO 500	33.8	30	M12	16

Design / Outline Drawing(mm)

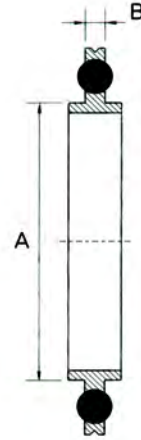


Technical Specification ISO DOUBLE CLAW CLAMPS

Flange Type	A (mm)	B (mm)	Thread Size	Clamps Required
ISO 63	23.9	43.7	M8	3-4
ISO 80	23.9	43.7	M8	4-8
ISO 100	23.9	43.7	M8	4-8
ISO 160	27.9	43.7	M10	4-8
ISO 200	27.9	43.7	M10	6-12
ISO 250	27.9	43.7	M10	6-12
ISO 320	33.8	51.6	M12	8-12
ISO 400	33.8	51.6	M12	8-12
ISO 500	33.8	51.6	M12	12-16

CENTER RINGS

Design / Outline Drawing(mm) • Oring – NBR (Option : Viton)



Flange Type	A (mm)	B (mm)
ISO 63	70	3.9
ISO 80	83	3.9
ISO 100	102	3.9
ISO 160	153	3.9
ISO 200	213	3.9
ISO 250	261	3.9
ISO 320	318	5.6
ISO 400	400	5.6
ISO 500	501	5.6
ISO 630	651	5.6

Design / Outline Drawing(mm) • Oring – NBR (Option : Viton)



Technical Specification NW CENTER RINGS

Flange Type	A (mm)	B (mm)
NW 10	12	3.9
NW 16	17	3.9
NW 25	26	3.9
NW 40	41	3.9
NW 50	52.3	3.9

▶ FLANGES

Design NIPPLES - CF HALF, CF FULL



Design NIPPLES - NW HALF, ISO HALF, ISO FULL



Design REDUCER - CF, CF CONICAL, NW CONICAL



Design ELBOWS - CF90°, NW 90°, ISO 90°



FLANGES

Design TEES - CF, NW, ISO



Design 4-WAYS - NW, ISO



Design TUBES - NW FLEXIBLE



It's customers and we will take a big step forward to becoming the first specialized company in the vacuum industry.

e-mail : sales@vactech.com.my
website : www.vactech.com.my

 (주)PJ KODIVAC



VACTECH SDN. BHD.
(Company No. 389978-P)